

# VERDI COMMUNITY MEETING

May 21, 2016

# Wastewater – Sanitary Sewer/Septic



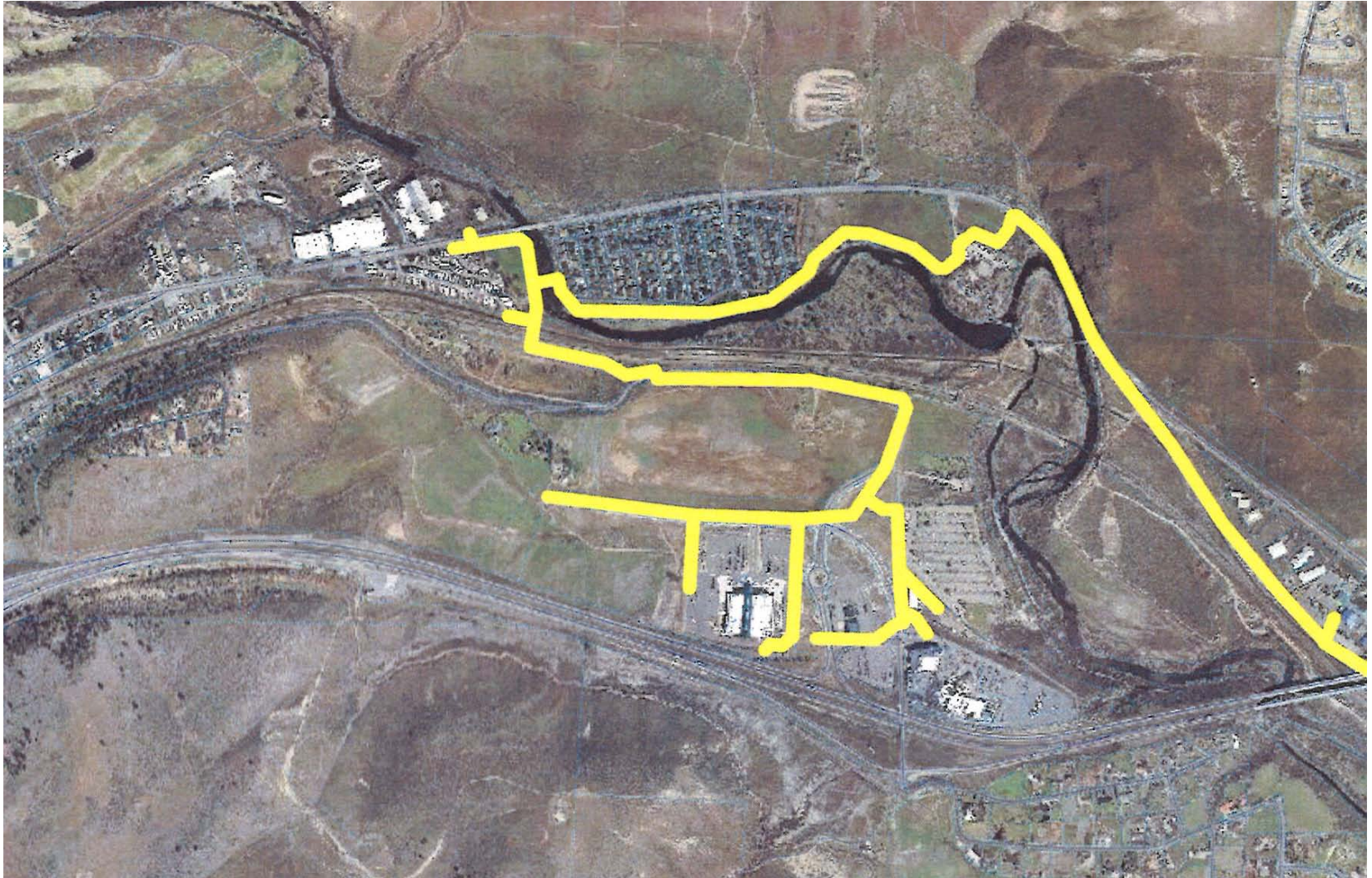
- City of Reno
  - Janelle Thomas
- Washoe County Health District
  - James English

- Sanitary Sewer
  - Ownership and Maintenance of Public Conveyance System
    - Current infrastructure was extended to Verdi area with current zoning in place and has capacity for future development
    - Additional sewage flow would be beneficial to existing infrastructure to reduce maintenance and odors
  - Sewage Treatment
    - Truckee Meadows Wastewater Reclamation Facility (TMWRF)
  - Review and approval of new development connections
    - Developments responsible for extending service to their site
    - City will own and maintain public infrastructure once constructed

# Current Conveyance System



# Current Conveyance System





- **Septic Systems**

- Current septic systems not required to connect if operating properly
- New/Failing septic systems must connect per County Regulations
  - 200 feet from property for undeveloped or 400 feet from existing building
  - Easements available
  - Capacity available
- Residential Septic approved by WCHD.
- Non-Res approved by NDEP Bureau of Water Pollution Control

# Contacts



Janelle Thomas – City of Reno

Associate Civil Engineer

775-348-6926 [thomasj@reno.gov](mailto:thomasj@reno.gov)

James English – Washoe County Health District

Environmental Health Services Supervisor

775-328-2610 [jenglish@washoecounty.us](mailto:jenglish@washoecounty.us)

# Questions?

